

## Software for ElectroMagnetic TOMOgraphy

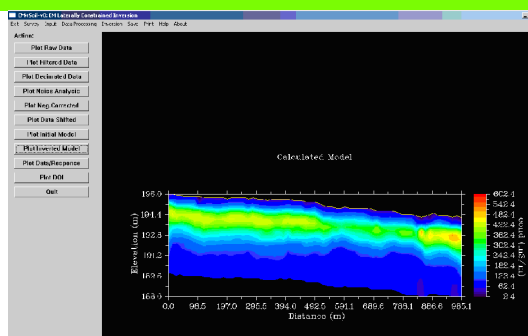
### GET MORE FROM YOUR DATA

**EMTOMO** presents the new release of the software **EM4Soil** for inversion of EM data (collected with DUALEM, GEONICS, GSSI Profiler or GEM instruments) now including a 1D Spatially Constrained Inversion (or Q3D) subroutine.

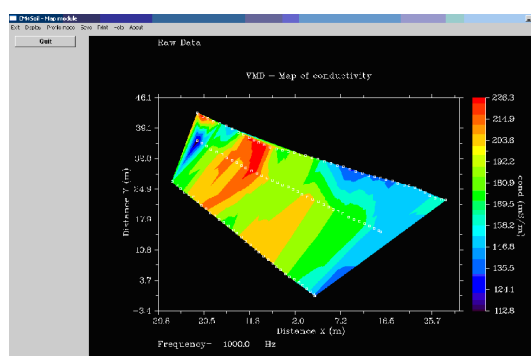
**EM4Soil** is a modular software including:  
 1D inversion of EM soundings,  
 1D Laterally Constrained Inversion (or Q2D) and  
 1D Spatially Constrained Inversion (or Q3D)  
 algorithms to invert data collected at individual sites, along individual or parallel profiles.

The program includes a MAP module that allows the global vision of the survey and models.

If you have a DUALEM421 or -42 or -21 or a GEONICS EM34 instrument the Q3D inversion can help you to get a more detailed image of the subsurface.



Model of conductivity calculated from data collected with DUALEM421 (Thanks to J.Triantafilis, UNSW, Australia).



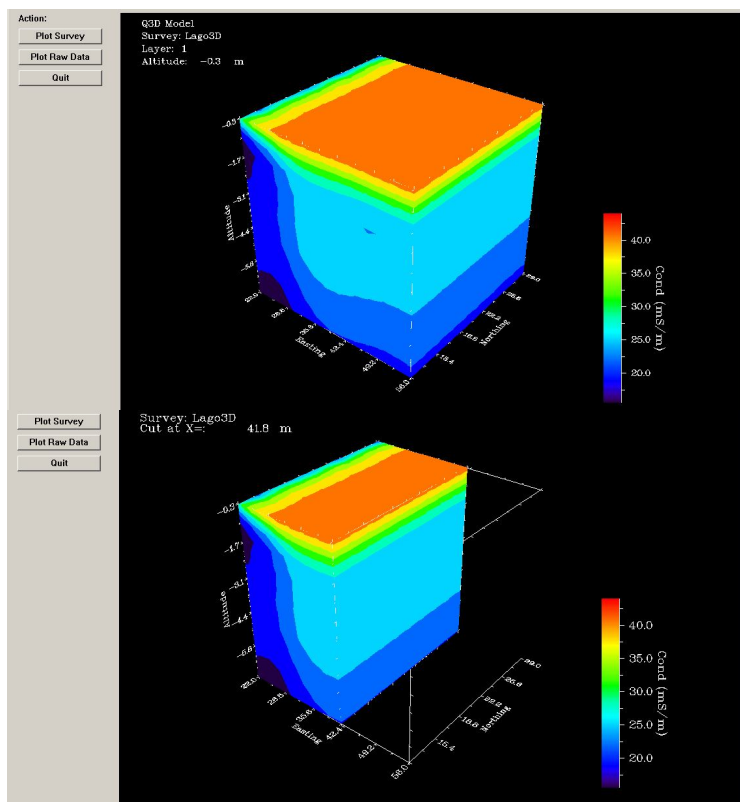
Map of apparent conductivity collected with GSSI Profiler (Thanks to M. Gehrig, Gehrig Inc.).

VISIT THE EMTOMO WEB SITE in

<http://emtomo.com>

OR EMAIL US FOR MORE DETAILS

[emtomog@gmail.com](mailto:emtomog@gmail.com)



Q3D Model calculated from DUALEM421s